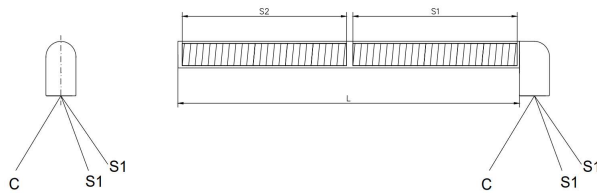
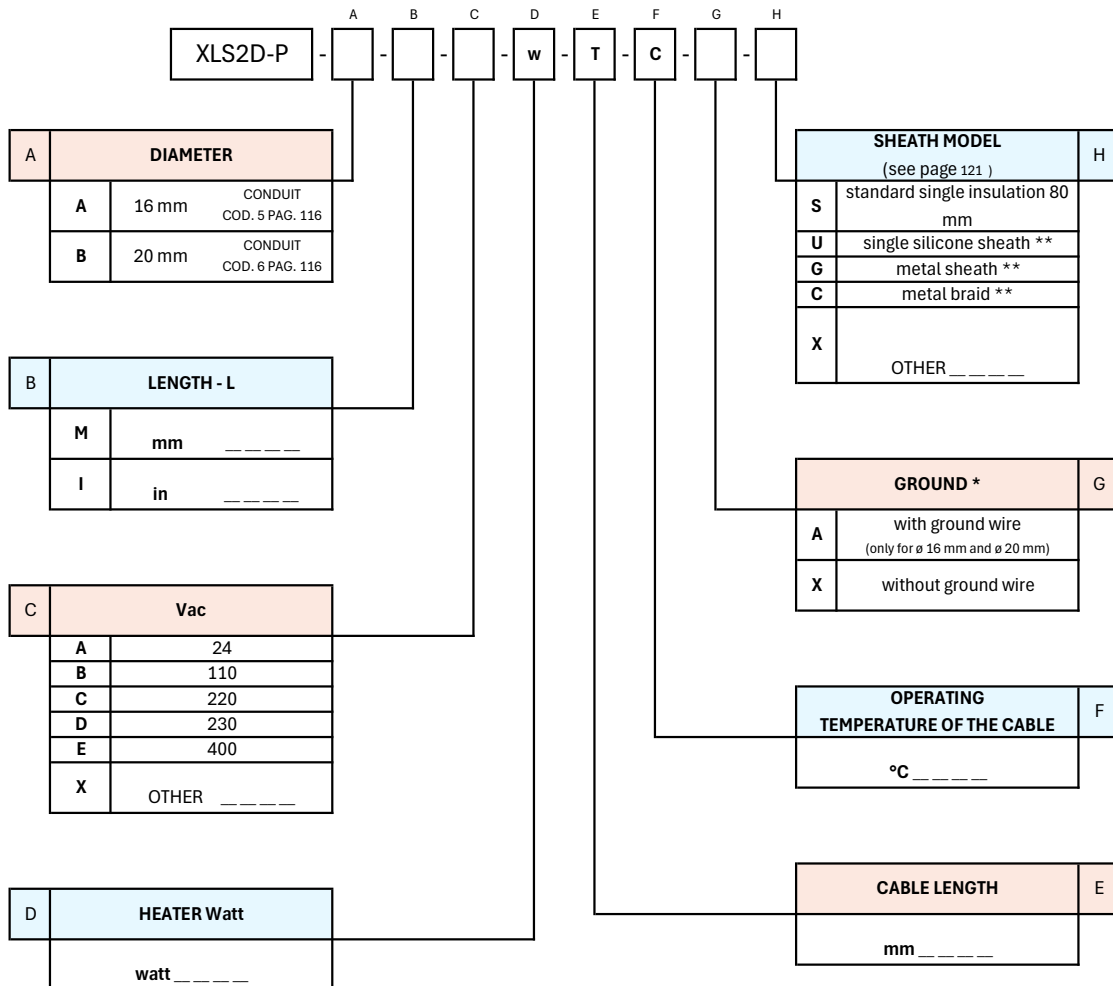




CARTRIDGE HEATER
WITH 2 SETTORI EQUAL AND DEPENDENT SECTIONS
AND 90° CABLE CONDUIT
XLS2D-P



Cartridge heater model XLS2D-P, with 2 equal dependent sections and 90° cable outlet, equipped with conduit. The body can be manufactured using different types of steel, depending on the application. Two + two cables exit from a single side. The cables have two different colors to distinguish the phases from the common. The phases are also numbered to identify the corresponding section. All heaters are equipped with an additional silicone sheath approximately 80 mm in length, with a diameter suitable for the power cable, to protect the cable exit from the heater. Sealing is defined based on the application and the characteristics of the heater.



* Of the same length as the cables

** The sheath length is always considered to be 100 mm shorter than the total cable length. The sheath diameter is defined by the manufacturer based on the resistor's specifications.