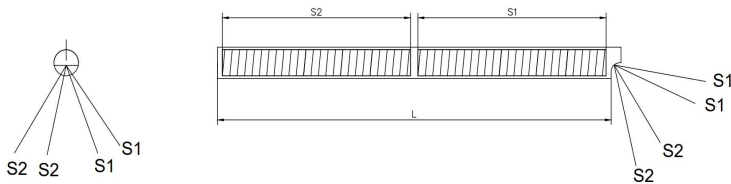


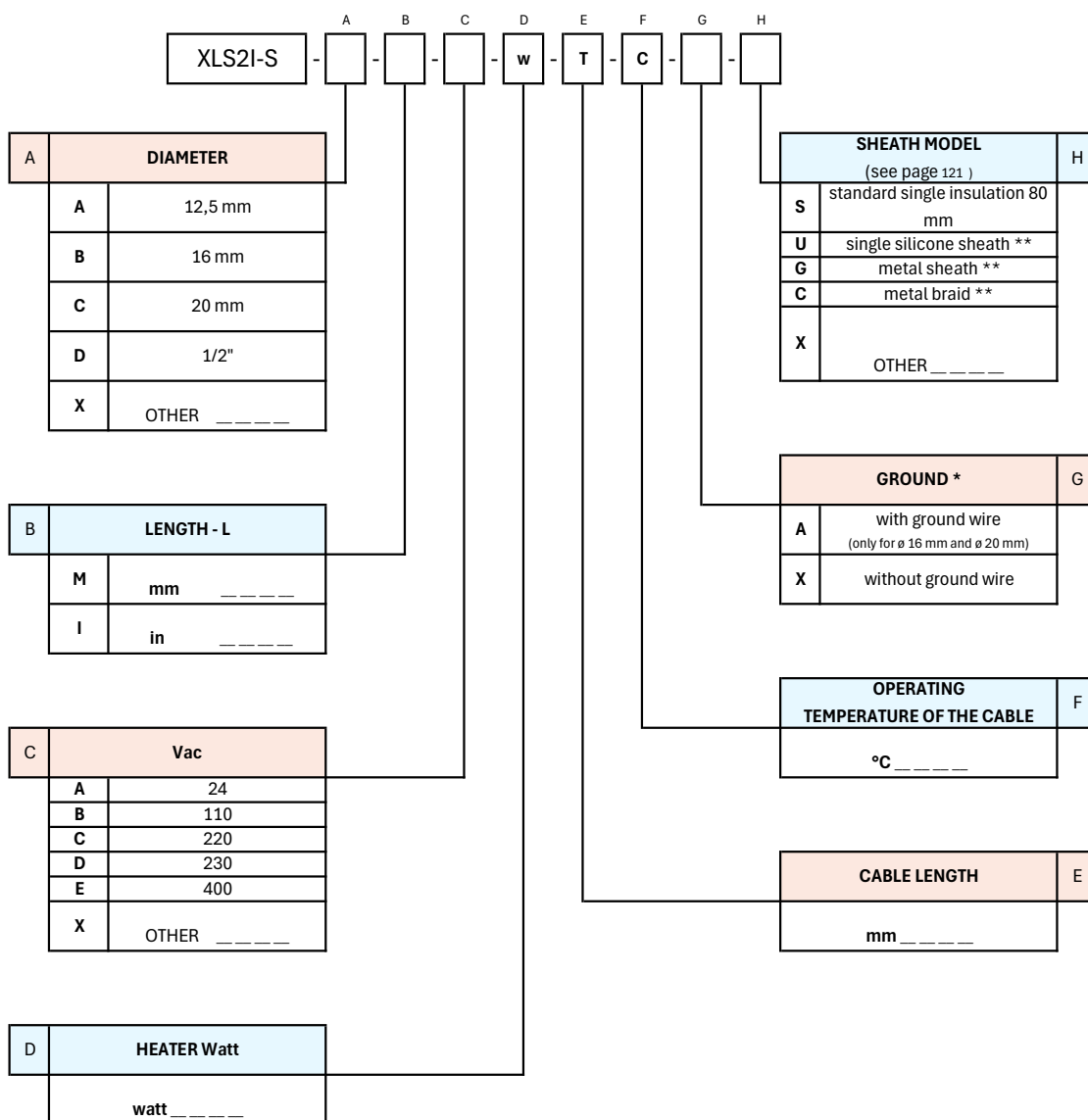


CARTRIDGE HEATER
WITH 2 EQUAL AND INDEPENDENT SECTIONS
AND PERPENDICULAR CABLE EXIT

XLS2I-S



Cartridge heater model XLS2I-S, with two equal and independent heating zones and 90° cable outlet through perpendicular cable exit hole. The body can be manufactured using different types of stainless steel, according to the application. Two + two wires exit from a single side and may have the same color, with numeric identification of the zones, or different colors for each zone. All heaters are equipped with an additional silicone sleeve, approximately 80 mm in length, with a diameter suitable for the power cable, to protect the cable outlet from the heater. Sealing is defined according to the application and the characteristics of the heater.



* Of the same length as the cables

** The sheath length is always considered to be 100 mm shorter than the total cable length. The sheath diameter is defined by the manufacturer based on the resistor's specifications.