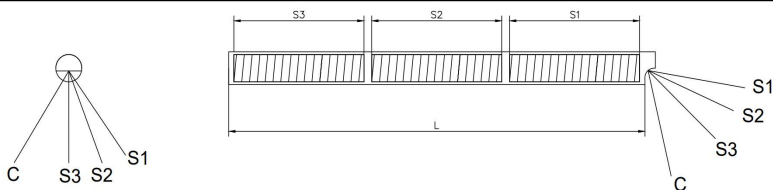


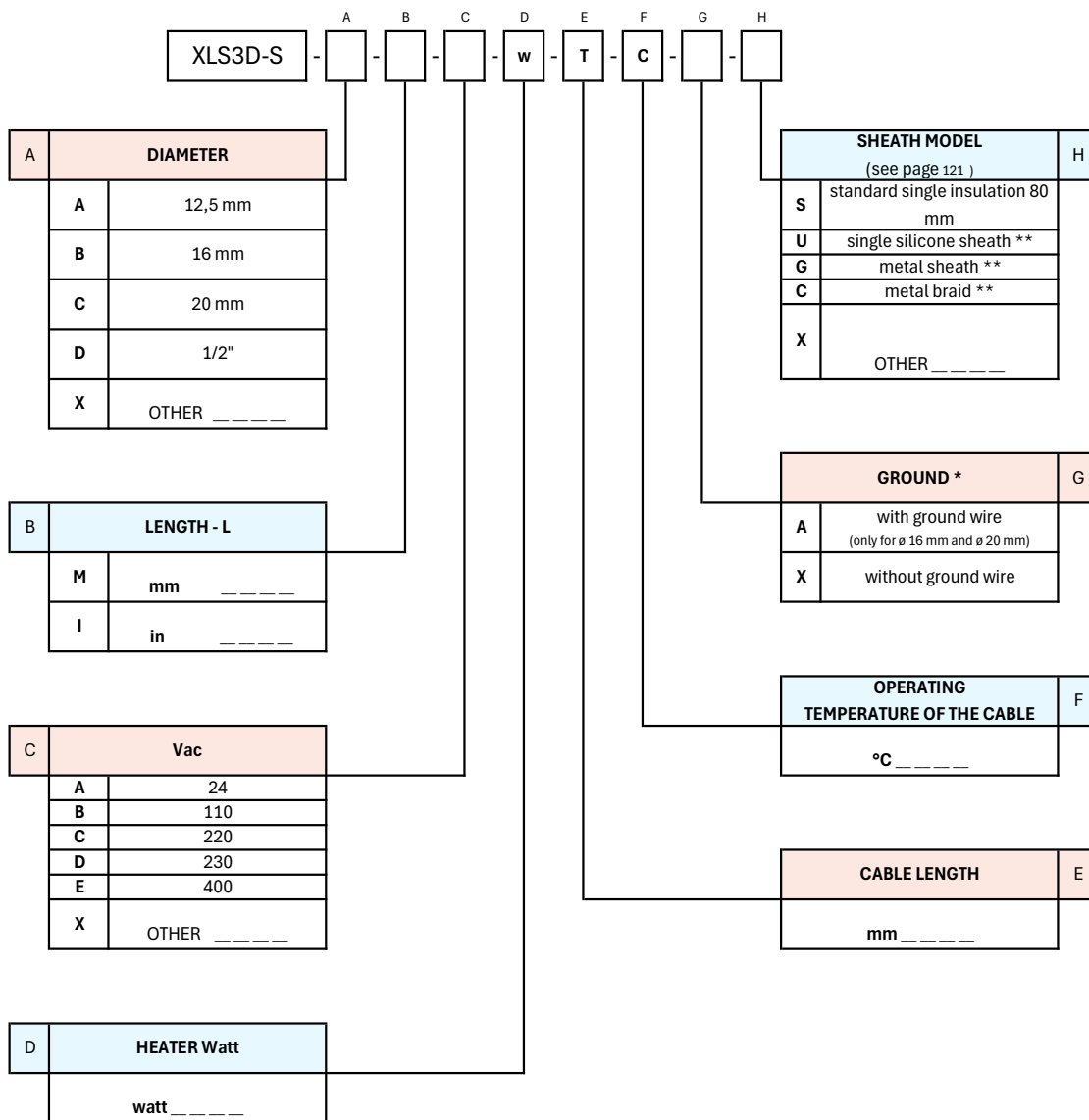


CARTRIDGE HEATER
WITH 3 EQUAL AND DEPENDENT SECTIONS
AND PERPENDICULAR CABLE EXIT

XLS3D-S



Cartridge heater model XLS3D-S, with 3 equal dependent sections with cable outlet through a perpendicular cable exit hole. The body can be manufactured using different types of steel, depending on the application. Three phases plus common are typically routed from a single side. The cables have two different colors to distinguish the phases from the common. The phases are also numbered to identify the corresponding section. All heaters are equipped with an additional silicone sheath approximately 80 mm in length, with a diameter suitable for the power cable, to protect the cable exit from the heater. Sealing is defined based on the application and the characteristics of the heater.



* Of the same length as the cables

** The sheath length is always considered to be 100 mm shorter than the total cable length. The sheath diameter is defined by the manufacturer based on the resistor's specifications.